



ARTIST'S IMPRESSION

# Shoalhaven Hospital Redevelopment

The NSW Government has committed \$438 million in the redevelopment of Shoalhaven District Memorial Hospital. It will be the health hub for the region, providing the majority of emergency, critical care, acute and sub-acute and non-admitted services locally, reducing the need to transfer patients to Wollongong and Sydney.



ARTIST'S IMPRESSION

For more information visit:  
[shoalhavenredevelopment.  
health.nsw.gov.au](http://shoalhavenredevelopment.health.nsw.gov.au)





# Shoalhaven Hospital Redevelopment

The new seven-storey hospital building will provide:

- A new emergency department (ED) and emergency short-stay unit to improve patient flow and reduce wait times
- New state-of-the-art intensive care unit (ICU)
- Theatres and endoscopy procedure rooms, doubling capacity
- A dedicated cardiology inpatient unit (IPU), coronary care unit and catheterisation lab
- A new vascular surgery service and expanded orthopaedic, general surgery and urology services
- Overnight surgical IPUs and a dedicated day surgery unit
- New medical IPUs for specialties including gastroenterology, respiratory, oncology, endocrinology and general medicine
- A new acute mental health IPU
- A psychiatric emergency care centre for emergency and crisis response adjacent to the ED
- An expanded acute stroke unit collocated with a dedicated rehabilitation service to ensure early access to rehabilitation and minimise functional loss
- A new nuclear medicine department to support expanded clinical services including cancer, cardiology and respiratory care
- A new MRI service to provide improved diagnostic capacity
- Expanded medical imaging including CT, X-ray, ultrasound and mammography to support clinical services
- Significant increase in aged care capacity in a dedicated ward
- A sub-acute geriatric evaluation and management service
- A dedicated palliative care facility
- A new paediatric assessment unit which will provide additional capacity for day presentations and short-stay admissions
- A specialist rehabilitation unit for a range of conditions including stroke, orthopaedics, brain and spine injuries
- Expanded outpatient departments for follow up and management of admitted and non-admitted services
- Helipad on top of the new building with direct access to ICU and ED.

For more information visit:  
**[shoalhavenredevelopment.  
health.nsw.gov.au](http://shoalhavenredevelopment.health.nsw.gov.au)**





# Shoalhaven Hospital Redevelopment



## Project timeline

- AUG 2021** Master Plan completed
- MID 2022** Business case and schematic design expected to be completed
- MID 2022** State Significant Development Application submission expected to be lodged and early works / preschool expected to start
- LATE 2022** Main works tender expected to be completed
- EARLY 2023** Main works expected to start
- 2026** Construction expected to be completed

For more information visit:  
[shoalhavenredevelopment.health.nsw.gov.au](http://shoalhavenredevelopment.health.nsw.gov.au)





# Shoalhaven Hospital Redevelopment



## Landscaping

The new seven-storey hospital will be built next to the existing hospital. It will merge with the surrounding native landscape so that it becomes a building within a natural setting, and represents the benefits of the environment, biodiversity, sustainability and the community.

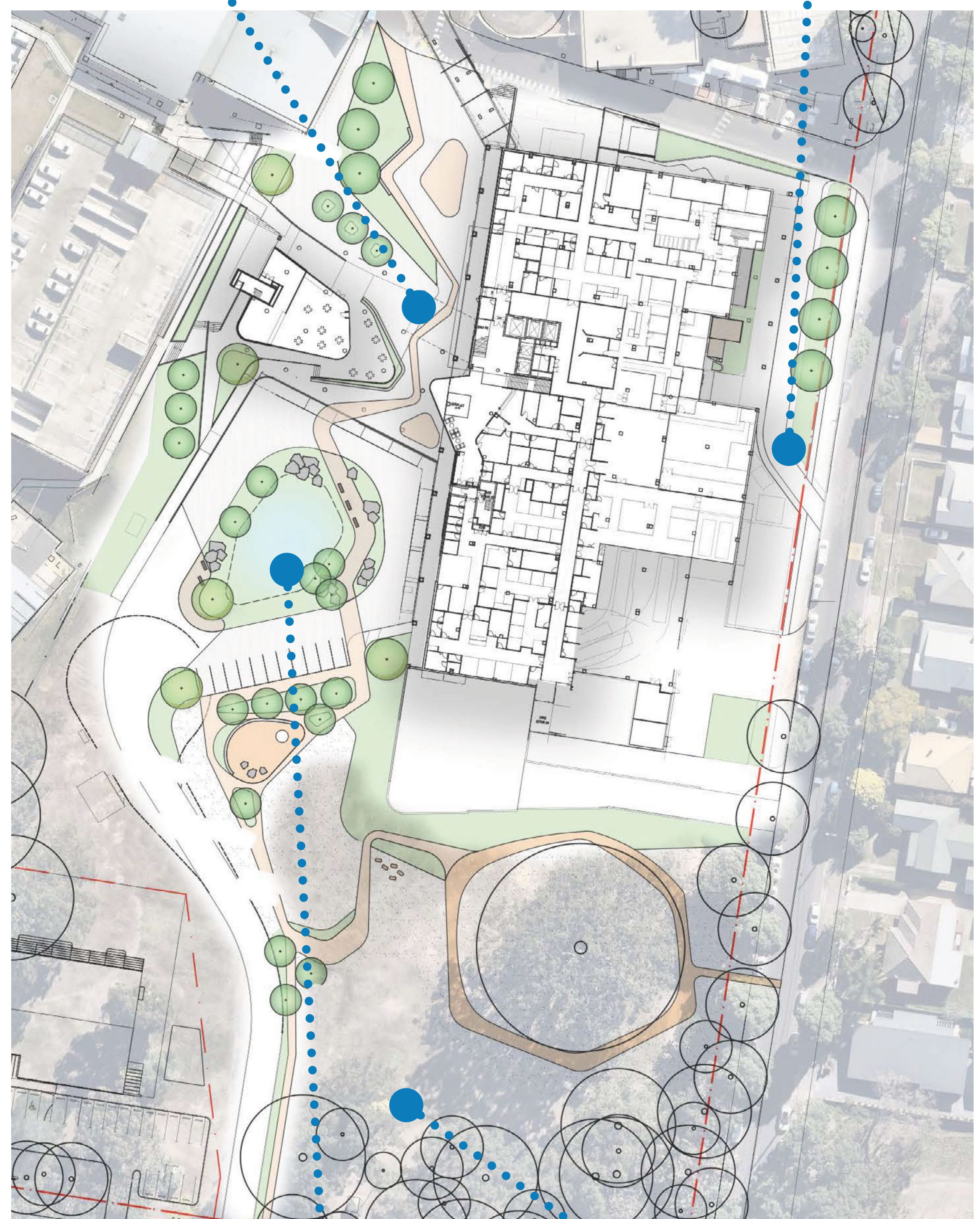
One of the key objectives is to provide culturally appropriate facilities to meet the needs of the First Nations people.

The project team is working closely with the local Indigenous community to ensure the new Shoalhaven Hospital is designed to promote cultural safety and to maximise its connection to Country of the First Nations people on which it is situated.

### Open space



### Street drop-off



### Entry raingardens



### Forecourt



For more information visit:  
[shoalhavenredevelopment.health.nsw.gov.au](http://shoalhavenredevelopment.health.nsw.gov.au)





# Shoalhaven Hospital Redevelopment

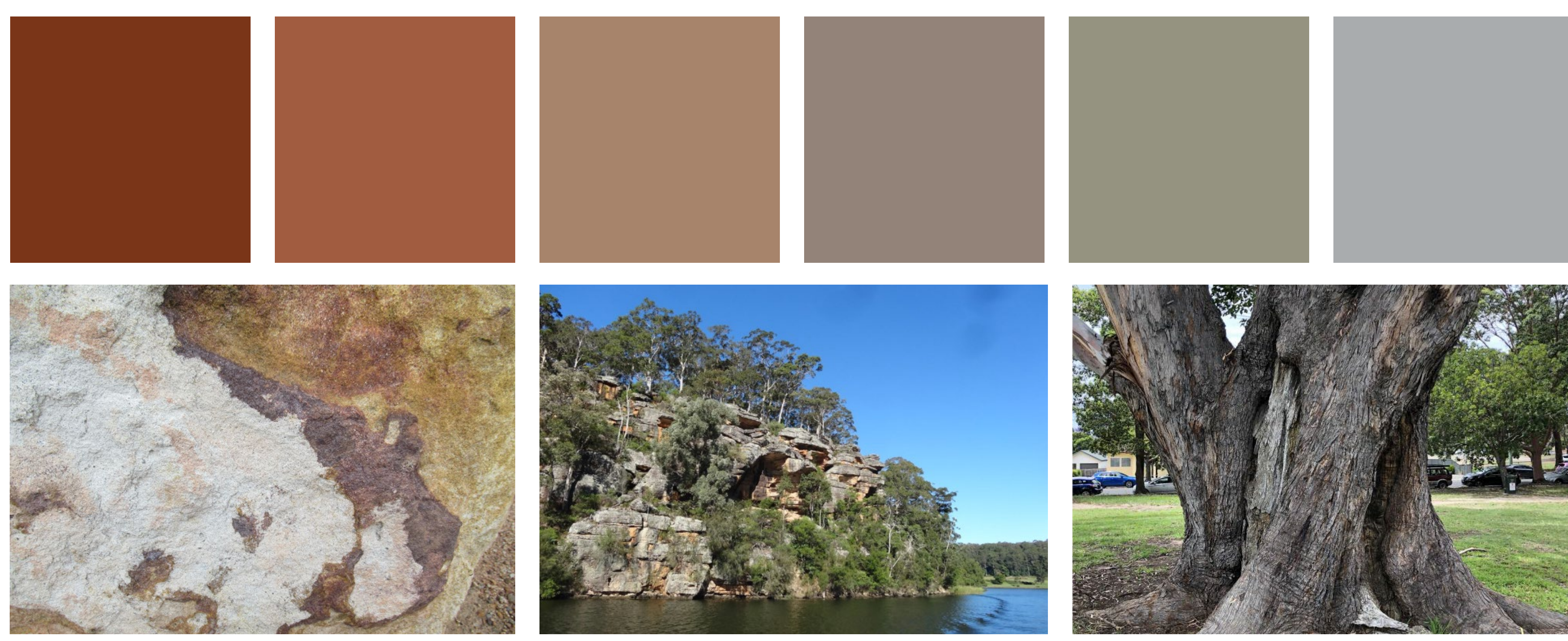
## Design

Interior spaces, colours, materials and furniture selected for health care facilities can support patients, their families, carers and visitors' wellbeing by providing:

- Memorable spaces to assist with wayfinding
- Natural, light-filled and life affirming spaces with a strong connection to the surrounding environment
- Integrating elements of the natural world through windows, materials, colours and textures
- Spaces that relate to the local Shoalhaven context
- Inclusion of local elements such as artworks, place names, historical and cultural items
- Access to outdoor gathering areas (Nowra Park, cafe, forecourts)
- Integration of current artwork co-ordinated with new concepts and wayfinding.

## Interior concept

The interior colour palette takes inspiration from the local rock formations within the area, as well as the local flora, river and sky.



For more information visit:  
[shoalhavenredevelopment.health.nsw.gov.au](http://shoalhavenredevelopment.health.nsw.gov.au)

